



Catalogue
of
ROYAL PALM
NURSERIES

REASONER BROS.
ONECO, FLA.
U.S.A.

1913

Oneco, Florida

10c, \$1.00 per doz.; 25c, \$2.50 per doz.; 35c, \$3.50 per doz.; 50c, \$5.00 per doz.

ASPIDISTRA lurida. A grand old decorative plant from Japan. Leaves broad and canna-like, slightly variegated with white. If grown (as it may be safely) in a shaded place continually, it has more white variegation than when in full sunlight. Grows about 18 inches high. 50c, and \$1.00.

CARLUDOVICA palmata. The Panama Hat plant. Resembles a palm, but has no trunk. Leaves palmate. A very decorative plant, reaching a height of about 4 or 5 feet. Beautiful plants 50c, \$5.00 per doz. Large with full character 75c and \$1.00.

CODIAEUM variegatum. Crotons. Splendid shrubby plants with variegated foliage, both narrow and broad, requiring plenty of heat and moisture. No other genus of decorative plants can furnish such a variety of color. Grand plants for bedding out, and for growing in pots or tubs. Mixed plants not labeled, small, all different. 10c, \$1.00 per doz.; larger, 6 to 10 inches high, 15c, \$1.50 per doz.; better, 25c, \$2.50 doz. Large specimens 50c to \$2.00.

Amabile. (Sometimes called Variabilis.) Broad-leaved of slow growth, very highly colored showing pink, purple, green, yellow. 25c, 50c.

Angustifolium. Very narrow-leaved; green and yellow. 25c.

Andreanum. Broad-leaved, high color; orange, pale-yellow, etc. 50c.

Aucubaefolium. Broad and short in leaf; green with yellow dots, bronze under surface. 15c, 25c and 35c.

Aureo-maculatum. Very small and narrow foliage; green, spotted yellow. 35c and 50c.

Baroness Rothschild. Broad leaves of crimson, yellow and green, sometimes showing pink. 50c.

Cooperii. Leaves yellow, veined and blotched, changing to red. 15c, 25c and 50c.

Cornutum. Leaves narrow, wavy - margined, dark-green, mottled yellow, midribs projecting at tips. 25c and 35c.

Dayspring. Leaves rather broad, orange-red mid-rib; broad-leaved. 35c and 50c.

Dermaianum. Small but broad leaves, bronze red, green and yellow. 25c.

Disraeli. Trilobed leaves of various shades of yellow and pale green; edges red. 35c and 50c.

Evansianum. Leaves three-lobed, veined yellow and mottled yellow, bronze and orange. 15c to 35c.

Fasciatum. Leaves obovate-elliptic; green, blotched yellow; petioles pink. 50c.

Gen. Faget. Leaves extremely broad; green and yellow; a superb show variety. 75c.

Grayii. Something like Majesticum. 35c and 50c.

Hawkeri. Medium narrow leaf, mostly yellow. 25c and 35c.

Interruptum. Purplish-green above, with twisted midrib; broad-leaved. 35c.

Irregulare. Medium broad, rather oblong, shining green with yellow blotches and midrib. 15c, 25c, 35c and 50c.

Johannis. Long, narrow leaves; green, ribbed and margined yellow. 15c, 25c and 35c.

Maculatum-Katoni. Broad, three-lobed leaves, green with circular yellow spots. 25c and 35c.

Majesticum. Leaves narrow and long, mottled green and yellow, shaded crimson. 15c, 25c and 35c.

Makoyanum. Broad-leaved, with chocolate and carmine markings. 25c and 50c.

Maximum. Large, broad leaves, cream-colored and green. 25c and 50c.

Morti. Broad, long leaves, green and yellow. 15c, 25c, 35c and 50c.

Mobile. Broad-leaved, green and yellow. 25c.

Number Two (as previously catalogued). Rather narrow leaves, something like Irregulare, but with the colors of Veitchii. Leaves are curiously divided, having hanging tips. 25c and 50c.

Picturatum. Narrow, long leaves, green, carmine, yellow, orange, etc. Very rich-colored. 15c to 50c.

Queen Victoria. Broad leaves, beautifully colored green, yellow, magenta and crimson. 15c, 25c, 35c and 50c.

Regina. Broad, short leaves; crimson, brown, green and yellow. 25c and 50c.

Spirale. Leaves long, narrow, twisted, striped and marked with yellow, changing to crimson. 50c.

Splendens. Broad leaves, yellow and dull red on green ground. 15c, 25c and 35c.

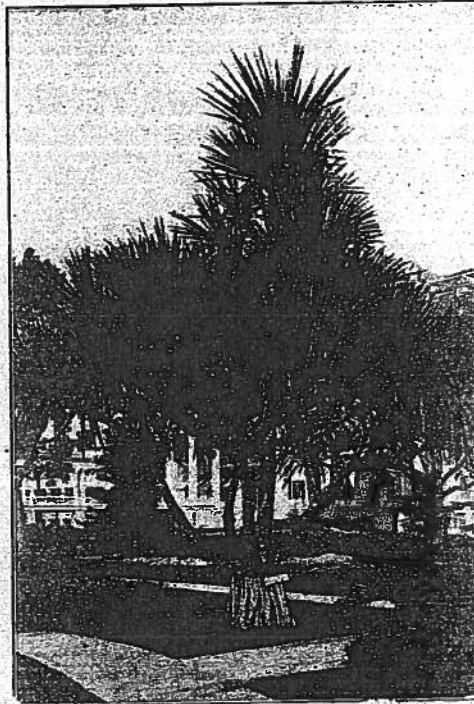
Stewartii. Broad leaves, yellow, green and red. 35c and 50c.

Tortilis. A curiously twisted and curled-leaved sort, marked red and green, with a touch of yellow. 35c and 50c.

Veitchii. Broad-leaved, green, pink and crimson. 15c, 25c, 35c and 50c.

COLEUS. The unequalled bedding foliage plant. Also useful for window and porch boxes, etc. A good variety of colors and kinds. Fine plants 10c, 85c per doz., \$5.00 per 100; large plants 15c, \$1.50 per doz.

COSTUS speciosus. A curious Spiral Flag, with orange-colored flower heads. Makes a good shrubby plant in open ground here. 50c.



Pandanus Utilis, in a Large Size

CROTON. See Codiaeum.

DIEFFENBACHIA nobilis. A fine evergreen resembling a dwarfed Musa, with broad leaves profusely blotched with creamy white. Needs heat and moisture. 15c and 25c.

DRACAENA fragrans. A large green leaved plant somewhat resembling Maize, but much heavier and more fully furnished with beautiful foliage. A tough plant for the decorator. 50c.

D. Hookeriana. A rare new South African species with massive broad leaves, green. \$1.00.

D. indivisa. The famed Dragon Tree. A very handsome plant in all sizes whether one or fifteen feet in height. The leaves are very long and narrow, and the plant has a trunk three to ten inches thick in age. This is hardy in California and South Florida and useful in landscape gardening. Strong plants of decorative value 50c to \$2.00.

DRACONTIUM asperum. A rare aroid, with a single pertuse leaf. 50c.